







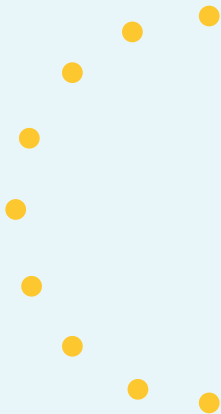
ABOUT 14 PEAKS

Coming to NZ in November 2022, 14 Peaks is a unique combination of mountaineering and a community challenge, the largest fundraising event of its kind held by Big Brothers Big Sisters Auckland.

Across 14 days, a team of four mentoring champions will summit the 14 tallest mountains in the North Island of NZ. Their journey will take them across 123 kilometres of terrain, climbing 22 vertical kilometres across the motu.

Throughout this two week endeavour, sponsors' staff members and the wider public will have the opportunity to walk, run, bike or swim the same distance and complete their own challenge as a pair - because as we know, things are always easier when you have a supporter alongside you.

All funds raised will go toward the creation of up to 80 new mentoring matches, and their continued support until at least 2025.





SUPPORTER OPPORTUNITIES

We have a range of sponsorship opportunities available, each of which offer a variety of benefits and are customisable to suit your objectives and budget. We will work with you to ensure your business has the best opportunity to engage your staff and customers.

PRESENTING PARTNER

\$25K (NEG)

Support the whole campaign by gift matching donors up to an agreed amount. Benefit from naming rights, priority media and PR exposure throughout, staff registration in the corporate challenge, and all other tier benefits.

Exclusive to one organisation.

PEAK PARTNER

\$5K

Sponsor a peak and enjoy priority branding and exposure on the day of the climb, and promotion throughout the challenge. Access to our corporate team-building challenge, exclusive social media collateral and activation support.

Exclusive to 14 organisations.

PARTICIPANT PARTNER

\$2500

Registration in the corporate team-building challenge for up to 100 staff participants. Additional staff member registrations available on a per head basis. Receive exclusive support, materials, and resources to enable your team to succeed.

PRODUCT PARTNER

\$NEG

Donate your product or service to help the BBBS champions along their journey. Engage and motivate our participants by donating product samples for fundraiser goodie bags and get your product in front of an engaged audience.

SUPPORTER BENEFITS



SUPPORT YOUR COMMUNITY

- Support our most vulnerable children and young people across Auckland to unlock their potential through mentoring
- Be a part of an inaugural event delivering significant support to children in need across Auckland
- Play a role in shaping the future of New Zealand

ENGAGE YOUR STAFF

- Access to a fully packaged corporate challenge to engage your employees in friendly competition and support team building
- Promote the health and wellbeing of your staff through group activity and time outdoors
- Help achieve a positive team culture through a unique and rewarding challenge

RAISE YOUR PROFILE

- Increase brand awareness, reach, and engagement through multi-channel media exposure
- Access new audiences and draw customers to your business by delivering an offering to challenge participants
- Align yourself with an internationally and locally recognised charity





ABOUT BBBS AUCKLAND

BBBS is about making sure every kid who needs it has someone to look up to in their lives. Our aim is to make a positive difference in the lives of children through professionally supported mentoring relationships.

We match kids in need with with stable, positive adults who spend at least an hour a week with them for a minimum of a year - helping with homework, supporting their passions, and simply being a listening ear.

Mentoring changes the lives of the most vulnerable kids in our communities, and with your help, we can reach the ones who need it most.

CONTACT

bigbrothersbigsistersauckland.org.nz

auckland@bbbs.nz

021 141 7418



14 PEAKS



Big Brothers Big Sisters
Auckland *Tuakana Teina*

